

# Achievement Results

## Student Performance to National Norms

Waikanae School Years 3 to 8 February 2011

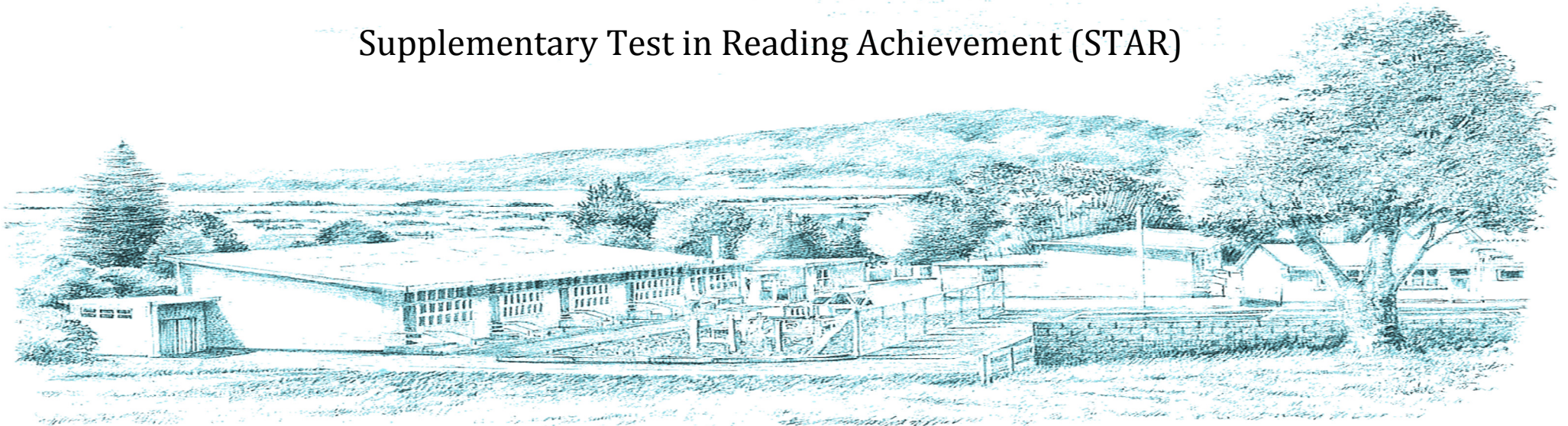
Progress and Achievement Test (PAT) Listening Comprehension

Progress and Achievement Test (PAT) Mathematics

Progress and Achievement Test (PAT) Reading Vocabulary

Progress and Achievement Test (PAT) Reading Comprehension

Supplementary Test in Reading Achievement (STAR)



## PAT and STAR Information Sheet

PAT and STAR Stanines enable a student's achievement to be compared against National Norms.

Stanines and their associated test scores have been scaled and 'normed' to fit the '***Bell Curve of Normal Distribution***'

STAR = Supplementary Test of Achievement in Reading

PAT = Progress and Achievement Test

**Listening Comprehension PAT (Year 3 to 8):** This test is brand new and this is the first year that it has been used in schools in New Zealand. The current test replaces one that had been used by schools for many years (20 plus). This test assesses a student's listening comprehension ability (understanding pieces of taped text that are pre-recorded). It is a useful assessment tool in that it enables us to identify students who perform well in oral situations but poorly in written situations. We look for a disparity between this test and the other tests (STAR, PAT Reading Comprehension and Reading Vocabulary). Students with a range of Stanine scores are often students with average to above average intelligence but who may have difficulties with reading or writing. As a result this test helps teachers to identify students who may need targeted teaching and learning e.g. Specialised Group Work, Rainbow Reading, Extension/Remedial Programmes, SPELD tutoring etc.

**Mathematics PAT (Years 3 to 8):** This tool became available in its current form to schools in 2007. There are various components within the test which are used by teachers to target teaching and learning. These are: Number Knowledge, Number Strategies, Algebra, Geometry/Measurement and Statistics. Once again this test has been dramatically revised and provides excellent insights into the next steps for learning and teaching.

**Reading Comprehension and Reading Vocabulary PAT (Years 4 to 8):** These two tests became available in their current form to schools in 2008. They assess a student's level of reading comprehension and the extent of their vocabulary (word knowledge). This is the second time that these tests have been used at Waikanae School. Both tests have been dramatically revised and provide excellent insights into the next steps for learning and teaching.

**STAR (Years 3 to 8):** This test became available in its current form to schools in 2008. It assesses a student's reading ability over a number of components. The various components within the test are....

1. For all Year 3 to 8 students: Word Recognition, Sentence Comprehension and Cloze Activities
2. For Year 3 students: Synonyms
3. For all Year 4 to 8 students: Paragraph Comprehension and Vocabulary Range
4. For Year 7 to 8 students: Language of Advertising and Writing Styles

## Description of Ethnic Groupings

Category	Number of Students in Test Group	Percentage of Test Group	Description	Notes
<b>All</b>	371	100%	All students tested from Year 3 to Year 8	
<b>Maori</b>	36	10%	All students identified upon enrolment as Maori	
<b>New Zealand European</b>	267	72%	All students identified upon enrolment as New Zealand European	
<b>Other</b>	51	14%	This category includes all students identified upon enrolment as being Asian, South East Asian Other and Other European	
<b>Pacific Peoples</b>	17	4%	This category includes all students identified upon enrolment as being Samoan, Fijian, Cook Island Maori or Other Pacific Peoples	Nine of these students are very new immigrants from Kiribati for whom English is a second language. Intensive support is currently in place for 7 of these students.

## Achievement Summary

***Overall performance in all five tests across the school is at or well above National Norms based on the percentage of students at or above Stanine 5 (Norm =60%)***

PAT Listening Comprehension	greater than the norm by 11%
PAT Mathematics	greater than the norm by 2%
PAT Reading Vocabulary	greater than the norm by 10%
PAT Reading Comprehension	greater than the norm by 7%
STAR	greater than the norm by 12%

***In comparison to National Norms our 'tail' is small in all five tests. The tail being those students with Stanine Result 1, 2, or 3 (Norm= 23%)***

PAT Listening Comprehension	less than the norm by 7%
PAT Mathematics	less than the norm by 7%
PAT Reading Vocabulary	less than the norm by 12%
PAT Reading Comprehension	less than the norm by 6%
STAR	less than the norm by 11%

***Maori Performance is at or well above National Norms based on the percentage of students at or above Stanine 5 (Norm =60%)  
In several tests Maori out perform both norm and school.***

PAT Listening Comprehension	greater than the norm by 14%	greater than the school "All" by 3%
PAT Mathematics	greater than the norm by 9%	greater than the school "All" by 7%
PAT Reading Vocabulary	greater than the norm by 6%	less than the school "All" by 1%
PAT Reading Comprehension	greater than the norm by 6%	less than the school "All" by 2%
STAR	greater than the norm by 15%	greater than the school "All" by 3%

***Pacific Peoples are well below National Norms based on the percentage of students at or above Stanine 5 (Norm =60%)***

PAT Listening Comprehension	less than the norm by 38%	less than the school "All" by 49%
PAT Mathematics	less than the norm by 10%	less than the school "All" by 12%
PAT Reading Vocabulary	less than the norm by 37%	less than the school "All" by 47%
PAT Reading Comprehension	less than the norm by 22%	less than the school "All" by 31%
STAR	less than the norm by 31%	less than the school "All" by 43%

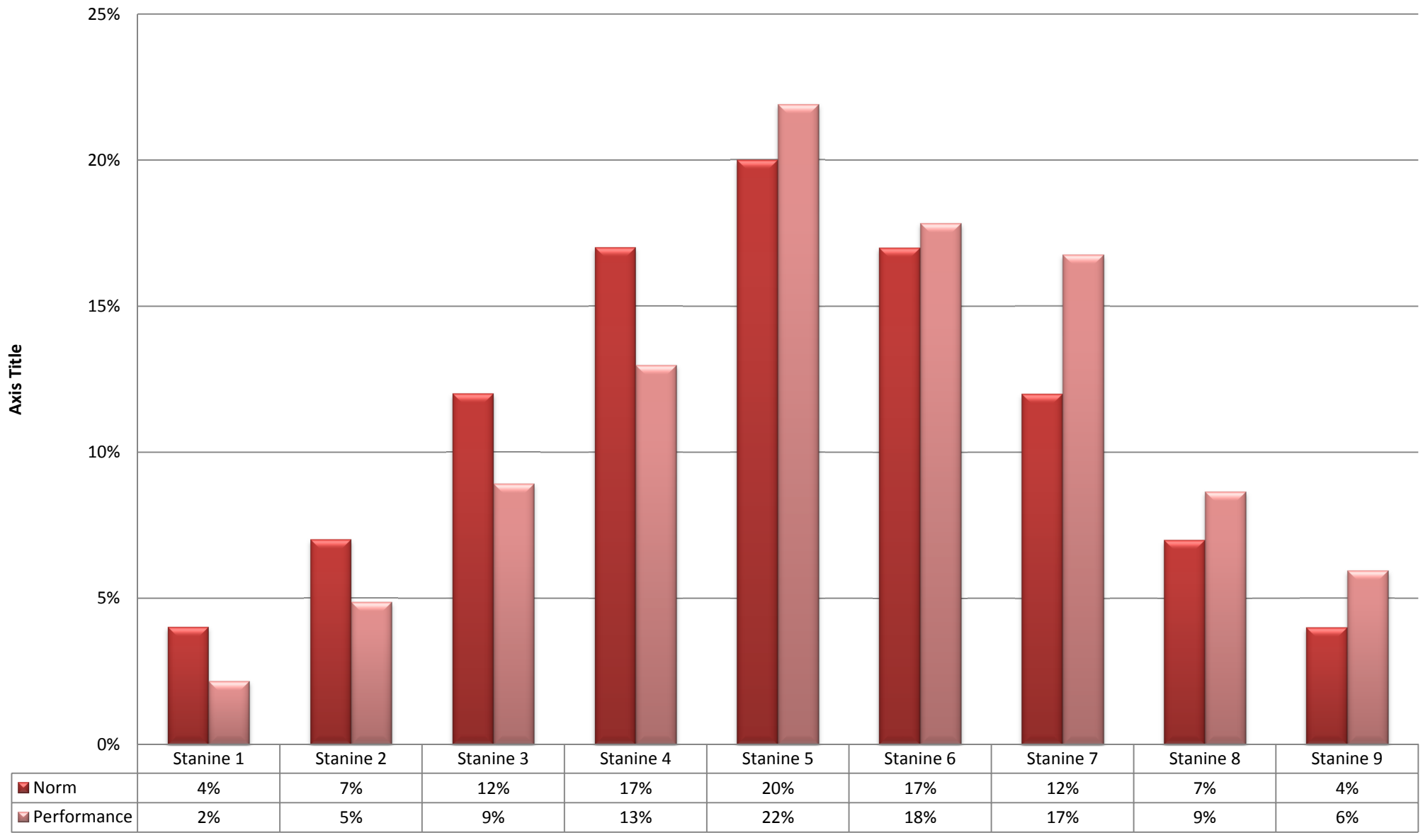
It is important to note that this group contains only 17 students or 4% of the test population and that staff and management are well aware of this issue and are taking all practical steps to lift the achievement of these students to a level commensurate with others.

Interventions include:

- individualised tutoring for oral language and reading
- in-class teacher aide support in mathematics
- PD for two staff members through Graduate Certificate TEAL
- Use of Lexia programme
- Use of differentiated learning task and class groupings and programmes etc.
- ELLP used to guide assessment practices and next learning steps
- This student group will feature in our School Targets for 2011 (see 2011 Charter)

# All

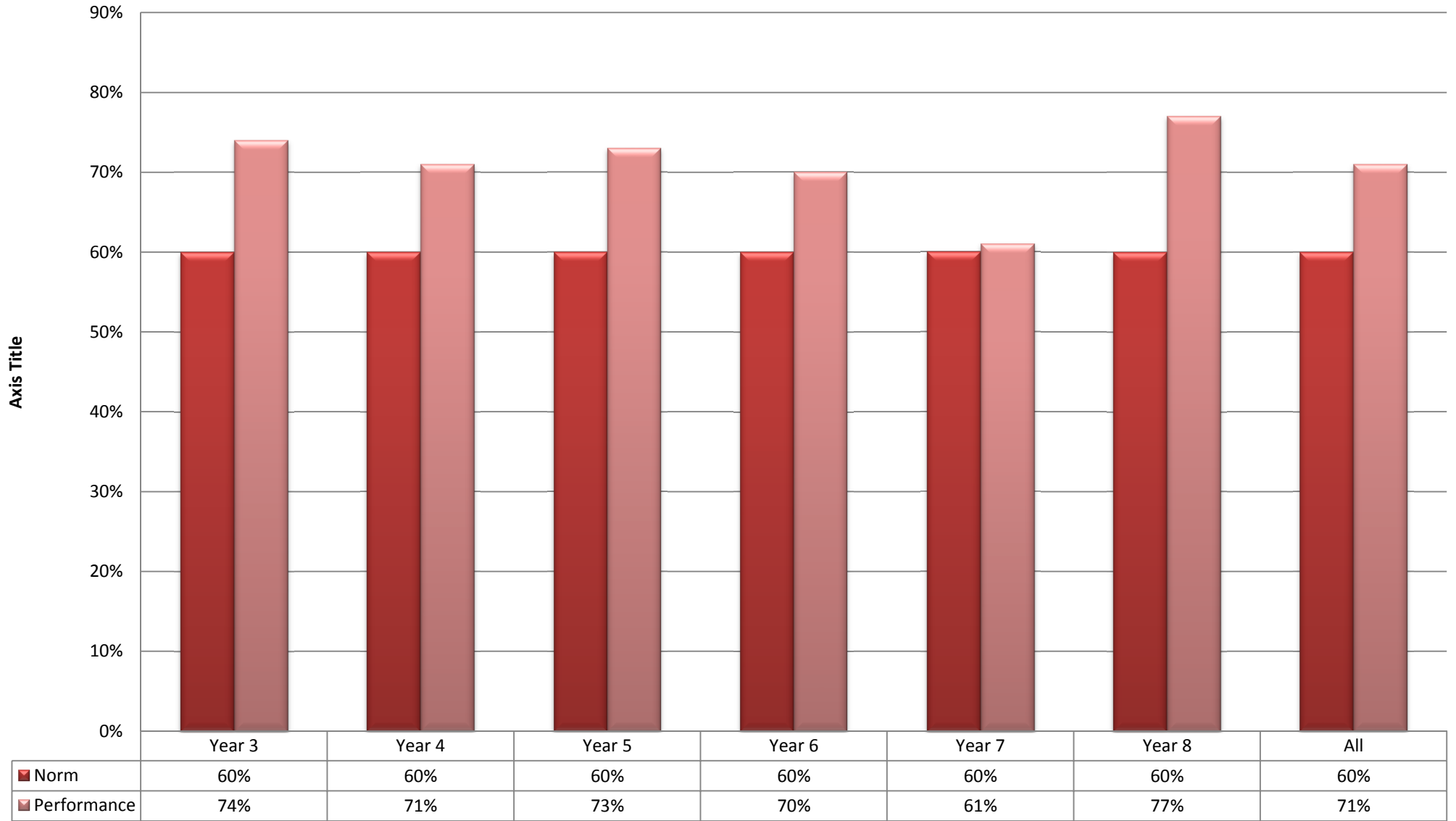
## February 2011 PAT Listening Comprehension Comparison to National Norms



# Year Group

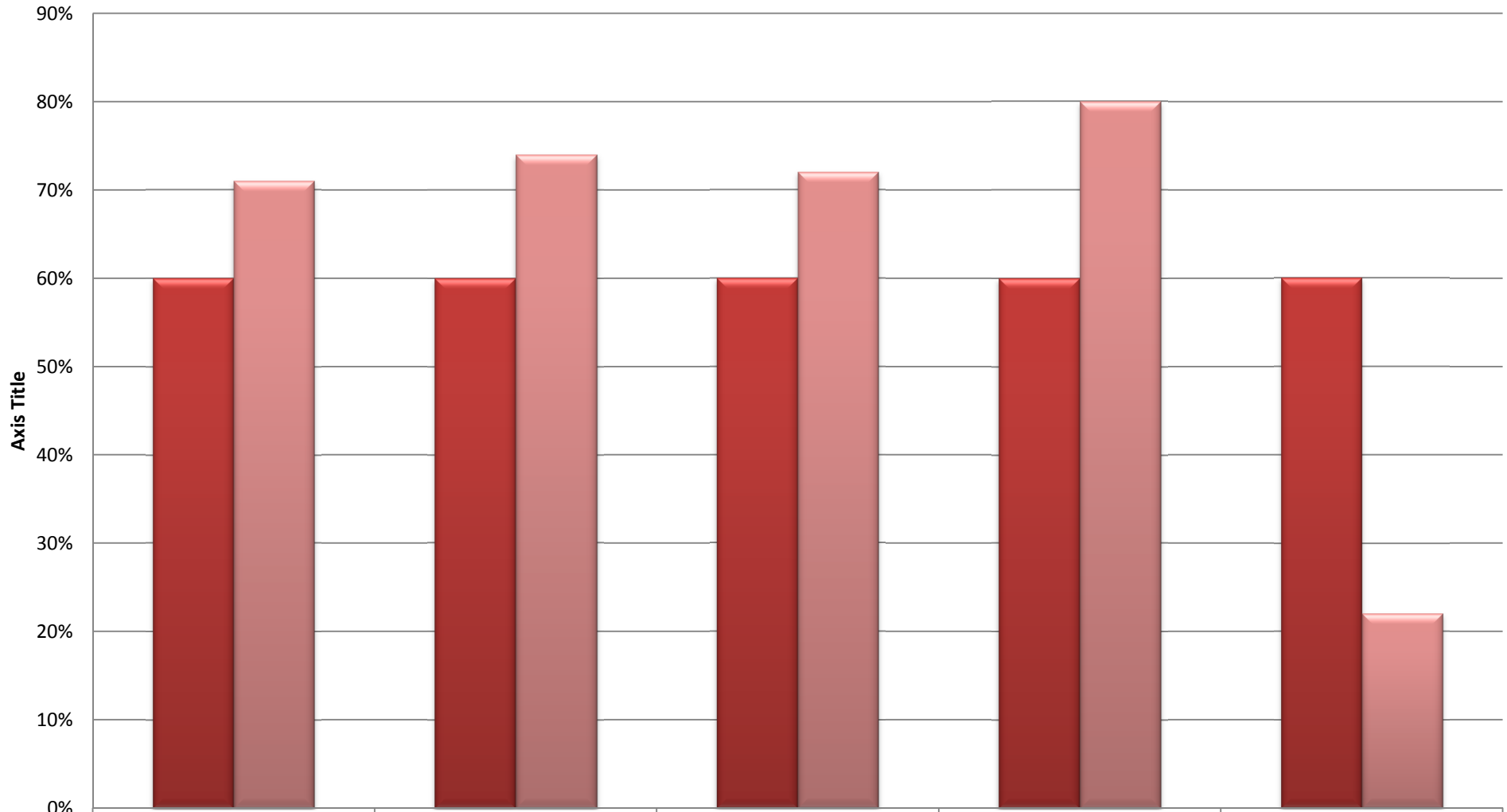
## February 2011 PAT Listening Comprehension Comparison to Norms

### Percentage of Students at or Above Stanine 5



# Ethnicity

## February 2011 PAT Listening Comprehension Comparison to Norms Percentage of Students at or Above Stanine 5



■ Norm  
■ Performance

All

Maori

NZ European

Other

Pacific Peoples

60%

60%

60%

60%

60%

71%

74%

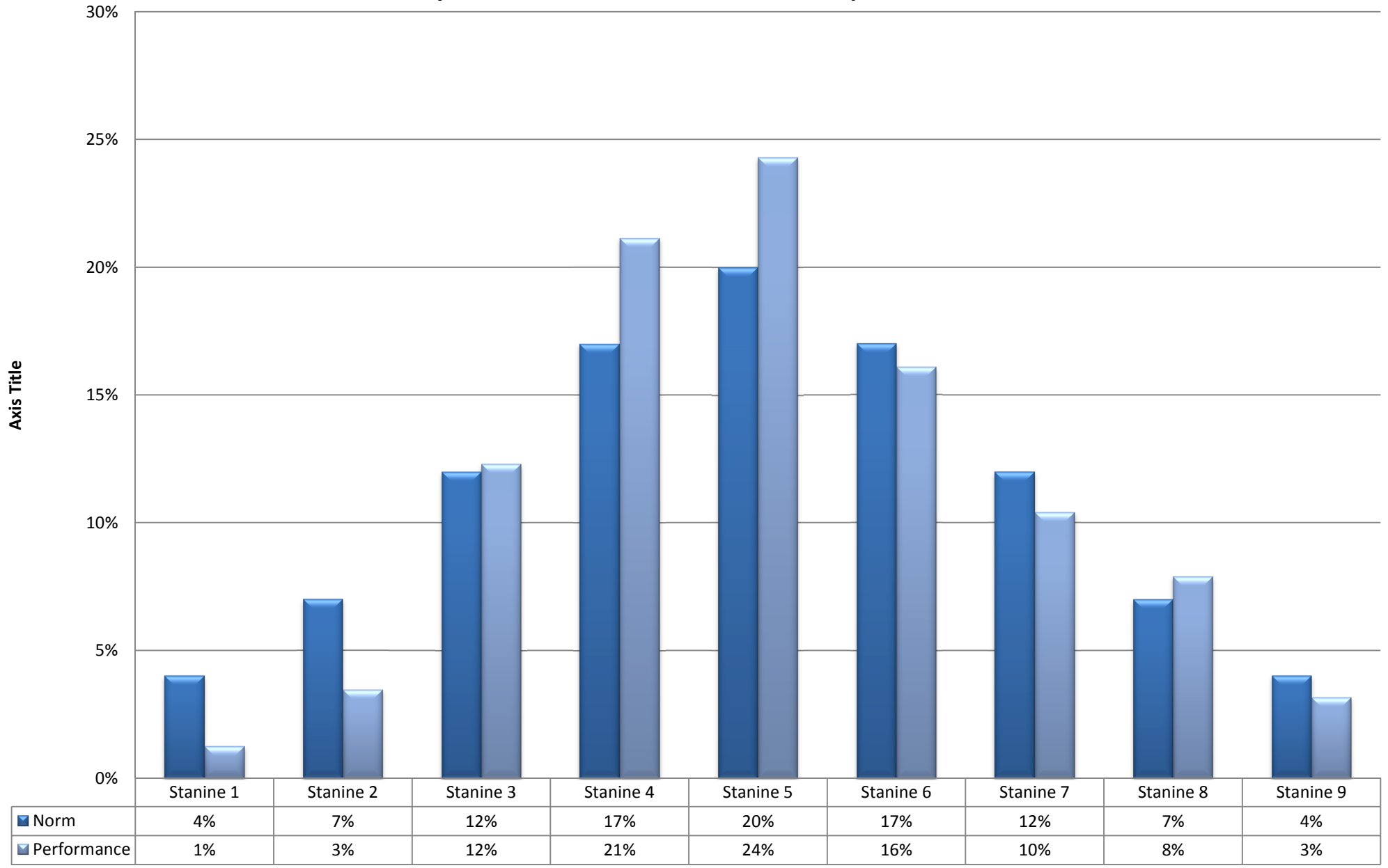
72%

80%

22%

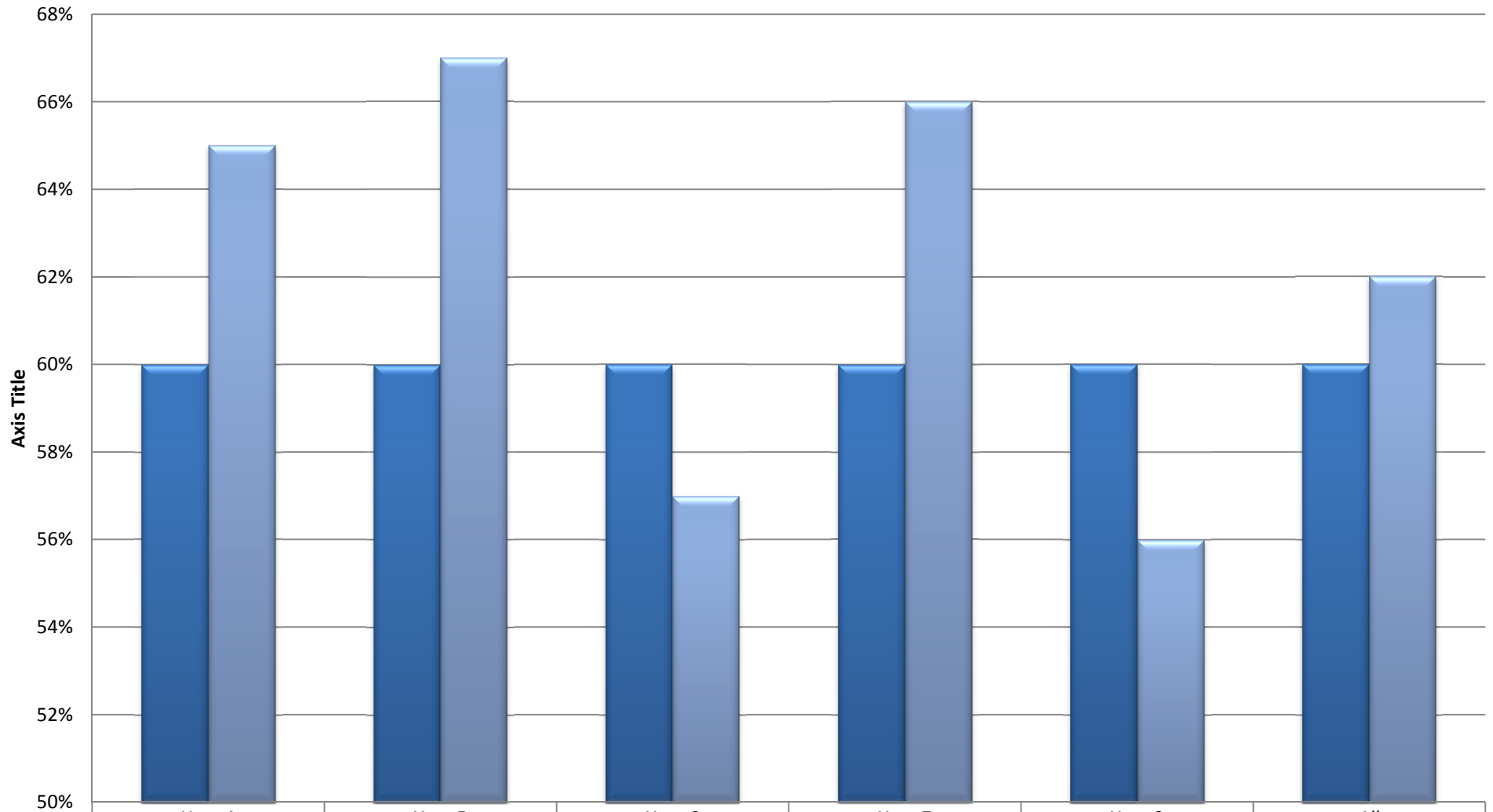
# All

## February 2011 PAT Mathematics Stanines Comparison to National Norms



# Year Group

## February 2011 PAT Mathematics Comparison to Norms Percentage of Students at or Above Stanine 5

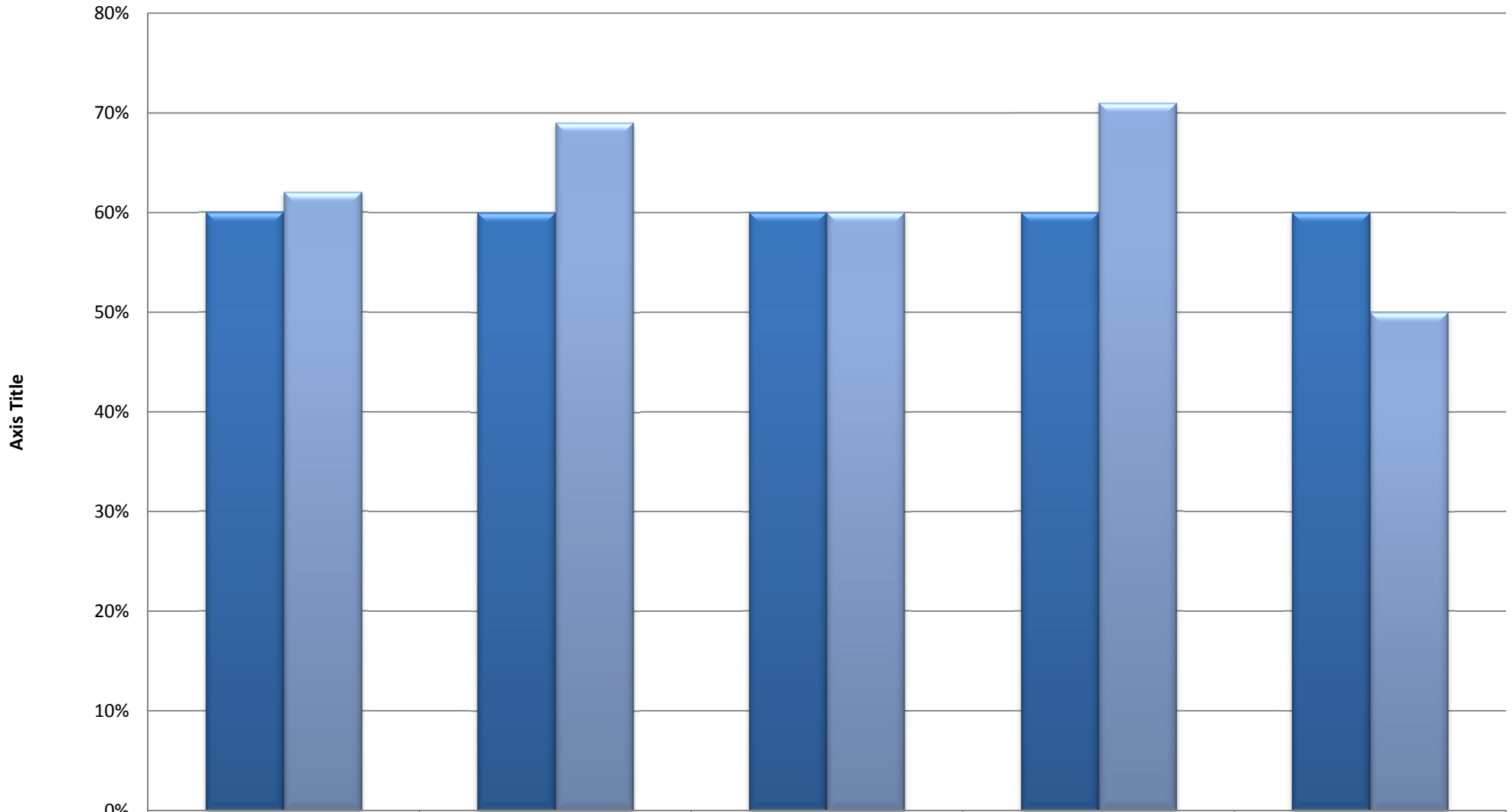


■ Norm  
■ Performance

Year 4	Year 5	Year 6	Year 7	Year 8	All
60%	60%	60%	60%	60%	60%
65%	67%	57%	66%	56%	62%

# Ethnicity

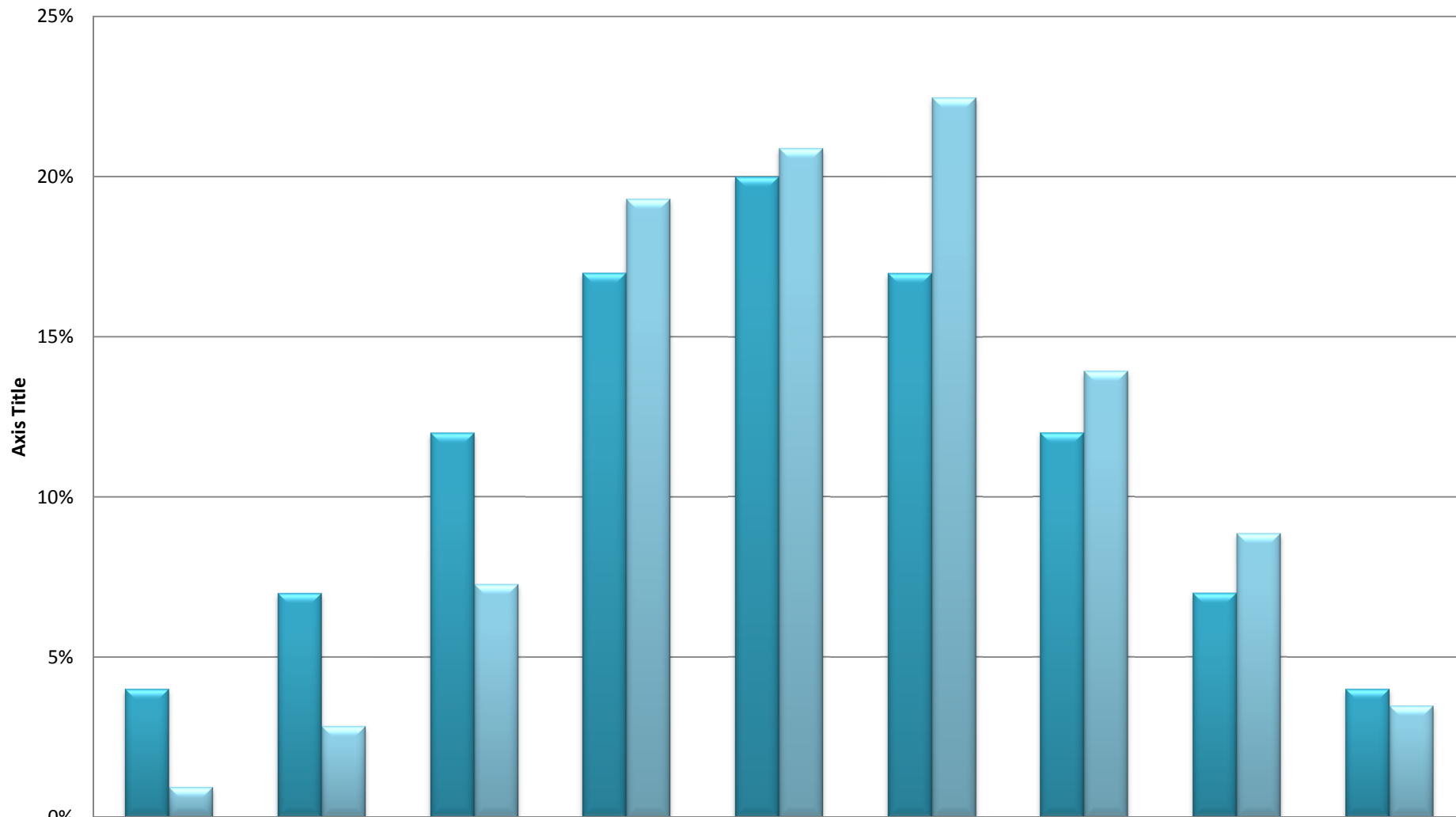
## February 2011 PAT Mathematics Comparison to Norms Percentage of Students at or Above Stanine 5



	All	Maori	NZ European	Other	Pacific Peoples
■ Norm	60%	60%	60%	60%	60%
■ Performance	62%	69%	60%	71%	50%

# All

## February 2011 PAT Reading Vocabulary Comparison to National Norms

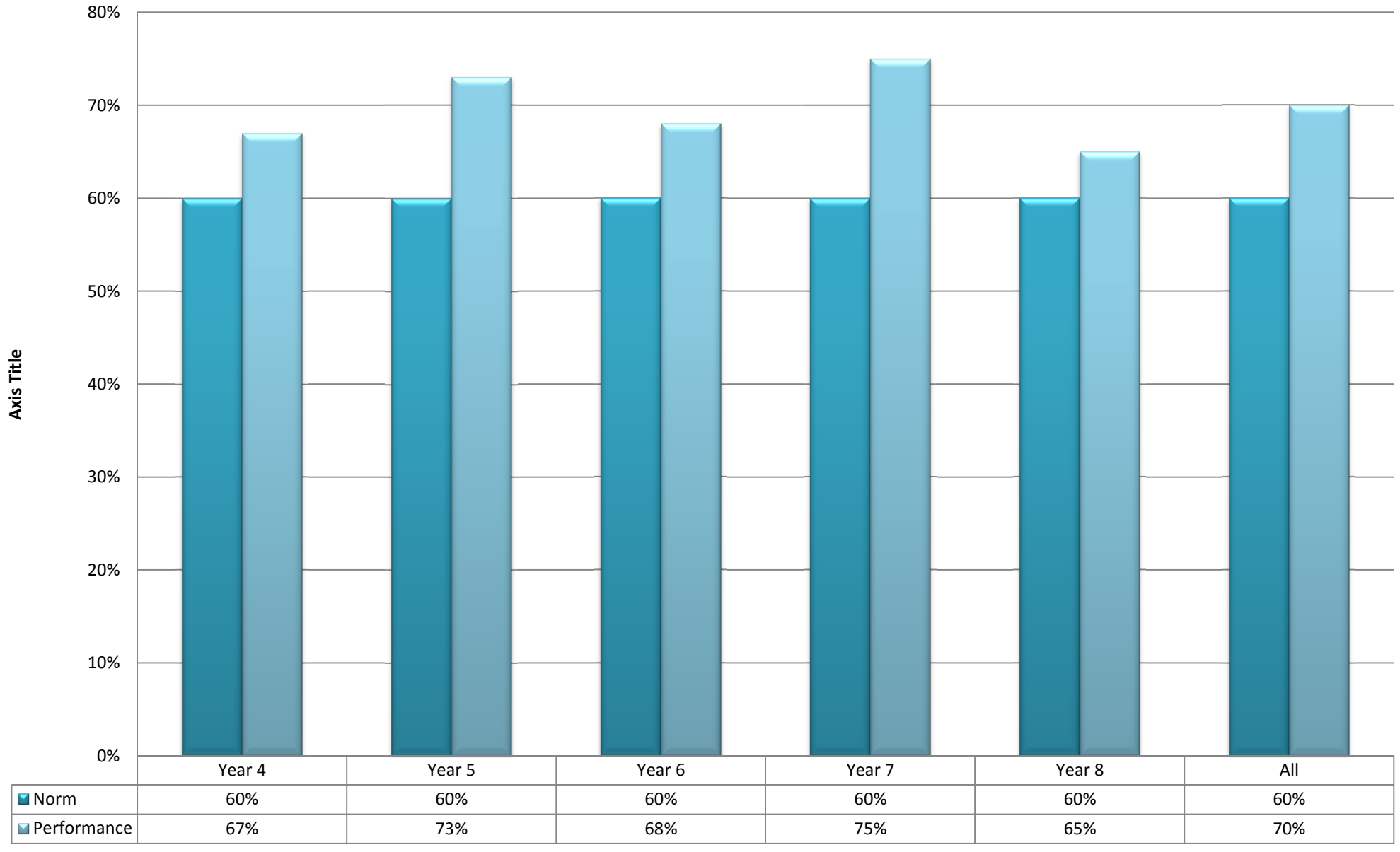


■ All Norm	4%	7%	12%	17%	20%	17%	12%	7%	4%
■ All Performance	1%	3%	7%	19%	21%	22%	14%	9%	3%

# Year Group

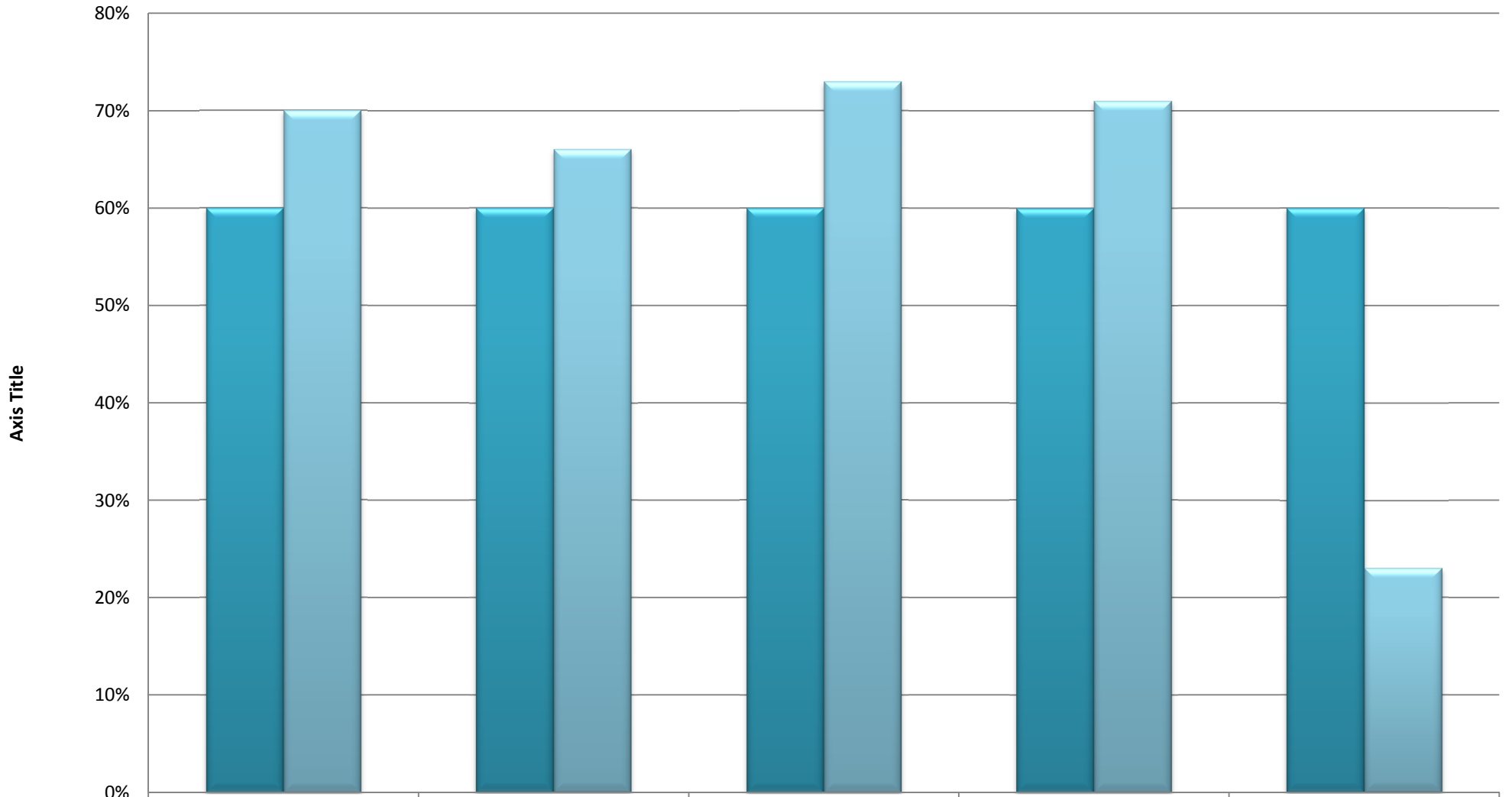
## February 2011 PAT Reading Vocabulary Comparison to Norms

### Percentage of Students at or Above Stanine 5



# Ethnicity

February 2011 PAT Reading Vocabulary Comparison to Norms  
 Percentage of Students at or Above Stanine 5

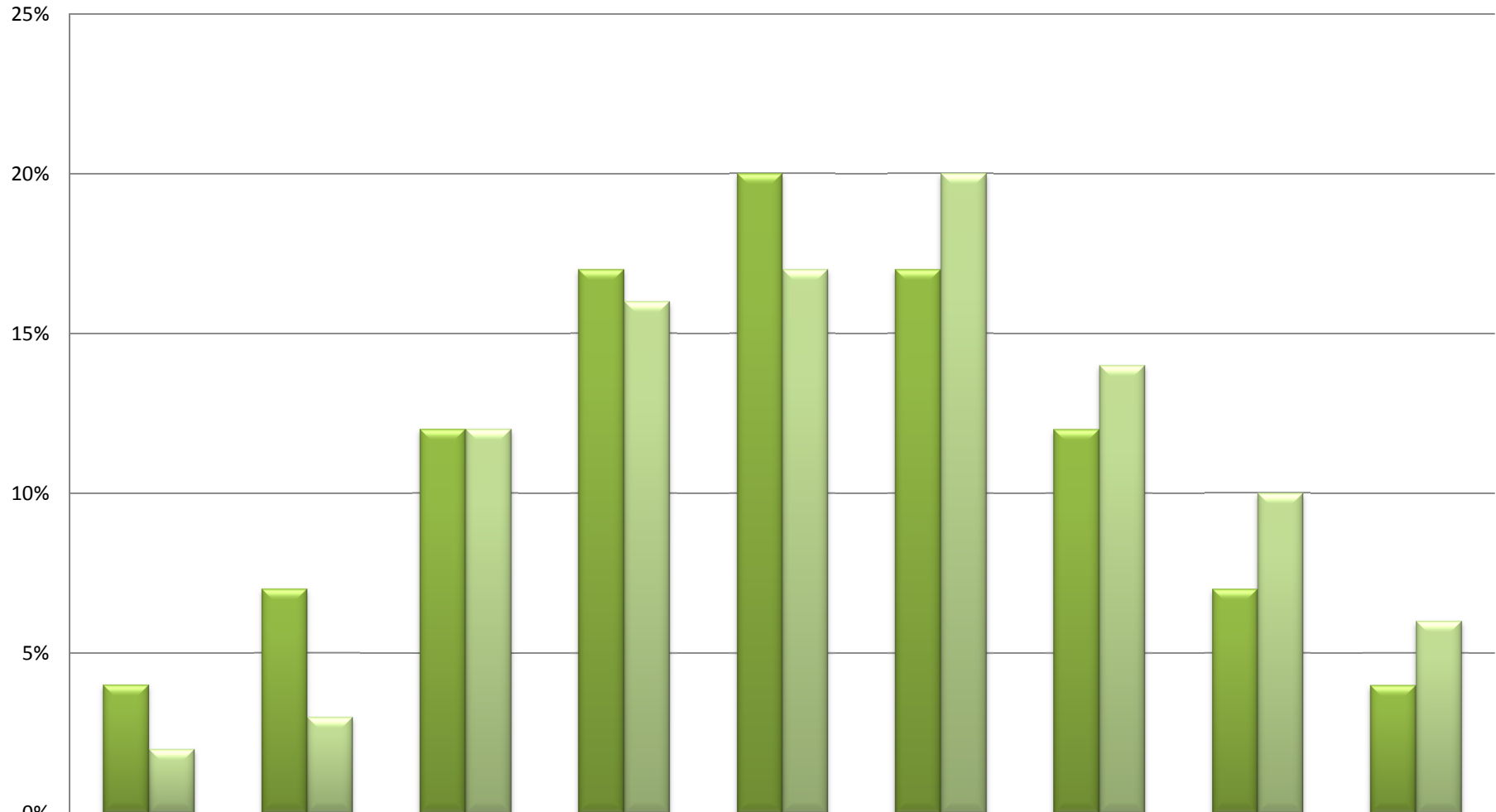


■ Norm  
 ■ Performance

	All	Maori	NZ European	Other	Pacific Peoples
Norm	60%	60%	60%	60%	60%
Performance	70%	66%	73%	71%	23%

# All

## February 2011 PAT Reading Comprehension Stanines Comparison to National Norms

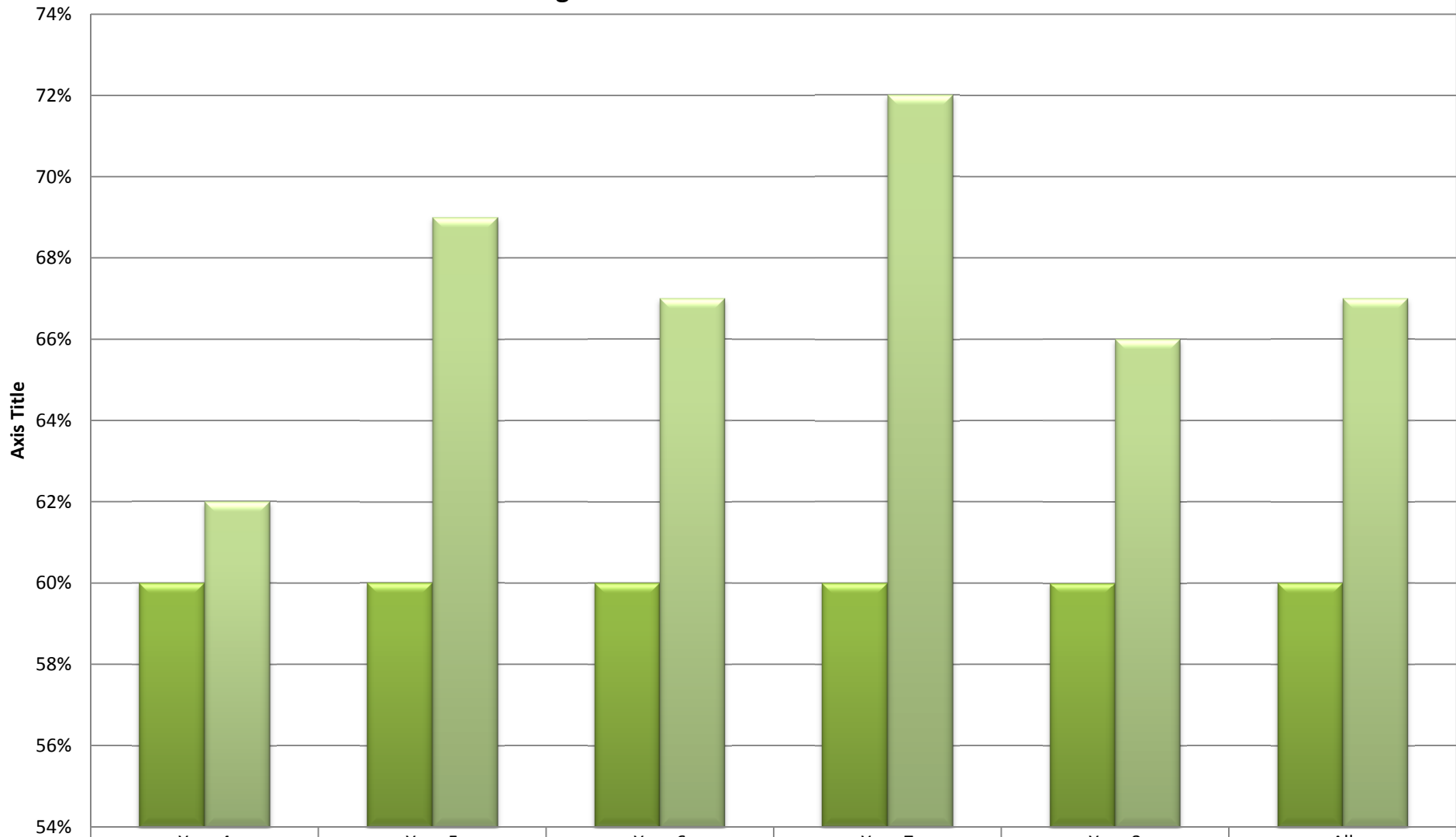


■ All Norm	4%	7%	12%	17%	20%	17%	12%	7%	4%
■ All Performance	2%	3%	12%	16%	17%	20%	14%	10%	6%

# Year Group

## February 2011 PAT Reading Comprehension Comparison to Norms

### Percentage of Students at or Above Stanine 5

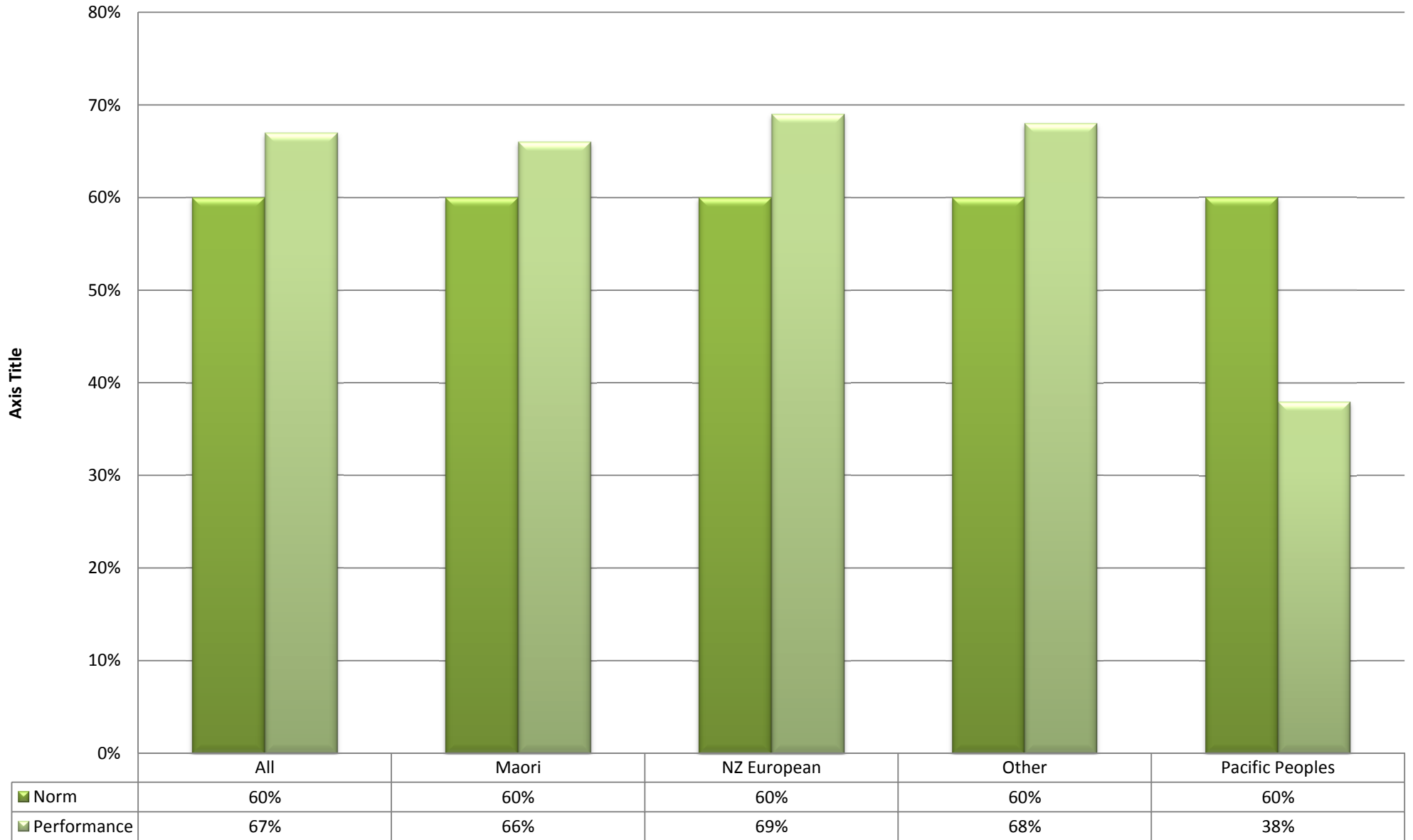


■ Norm  
■ Performance

	Year 4	Year 5	Year 6	Year 7	Year 8	All
Norm	60%	60%	60%	60%	60%	60%
Performance	62%	69%	67%	72%	66%	67%

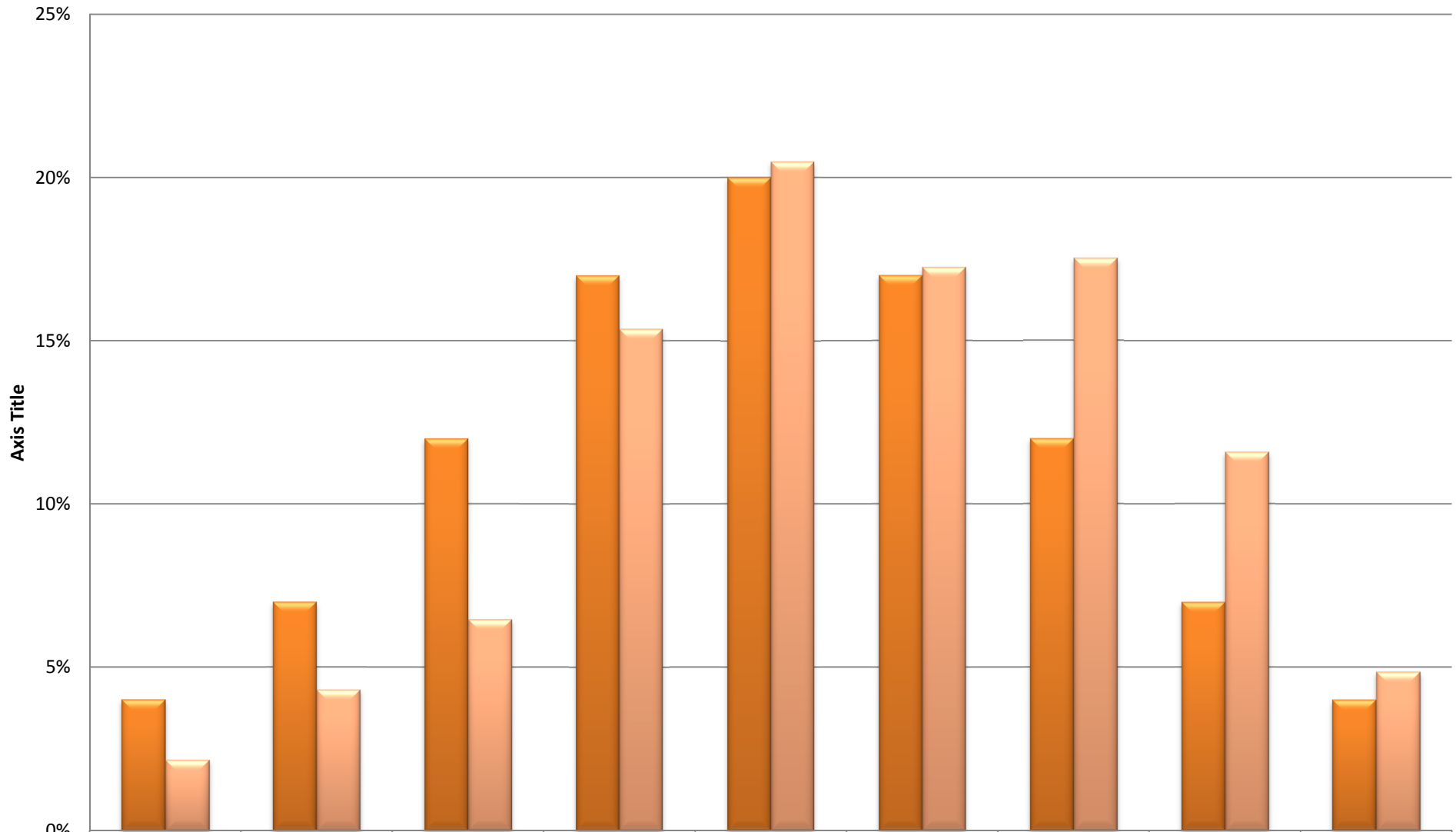
# Ethnicity

## February 2011 PAT Reading Comprehension Comparison to Norms Percentage of Students at or Above Stanine 5



# All

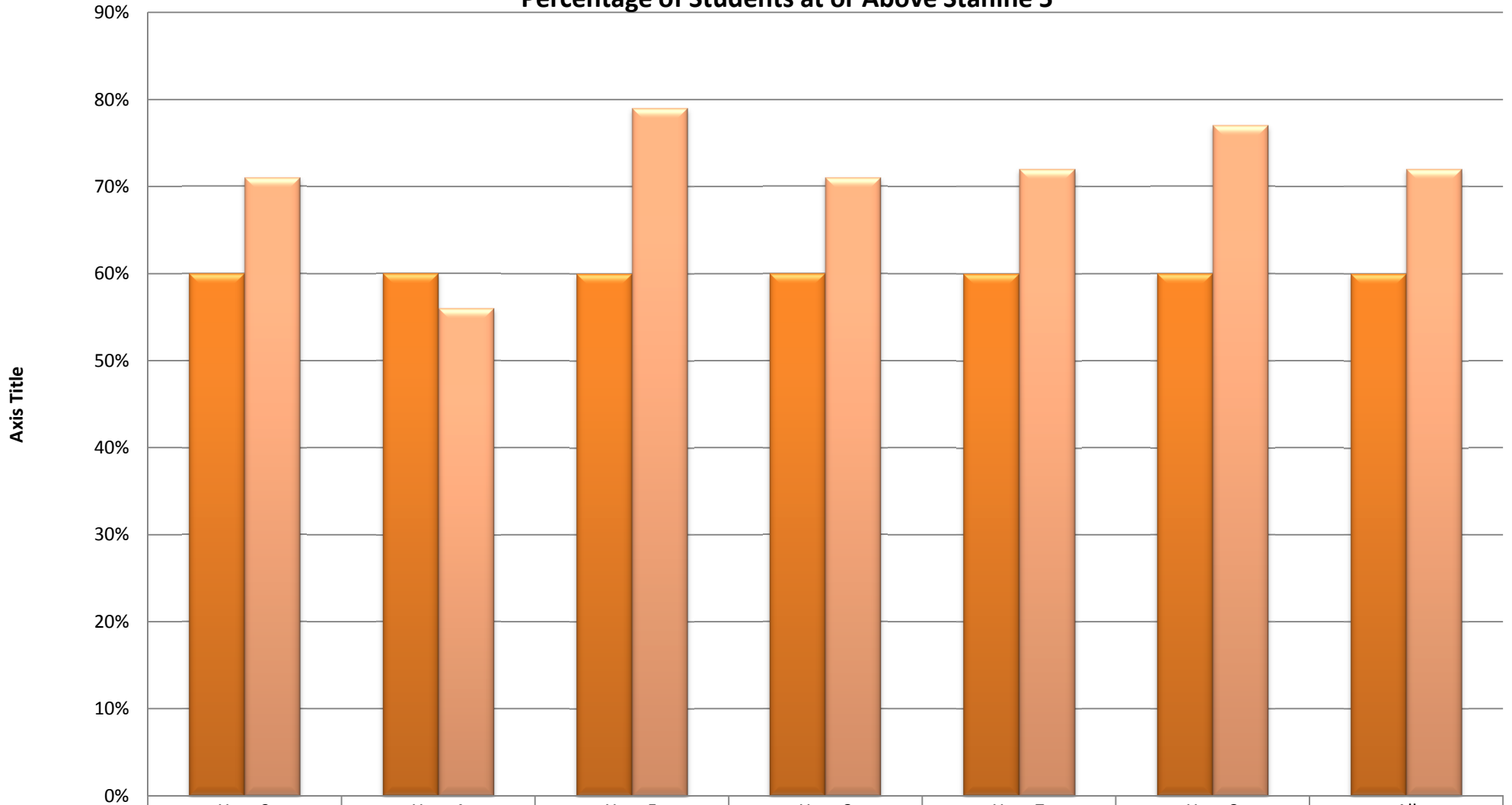
## February 2011 STAR Stanines Comparison to National Norms



	Stanine 1	Stanine 2	Stanine 3	Stanine 4	Stanine 5	Stanine 6	Stanine 7	Stanine 8	Stanine 9
Norm	4%	7%	12%	17%	20%	17%	12%	7%	4%
Performance	2%	4%	6%	15%	20%	17%	18%	12%	5%

## Year Group

### February 2011 STAR Comparison to Norms Percentage of Students at or Above Stanine 5



	Year 3	Year 4	Year 5	Year 6	Year 7	Year 8	All
■ Norm	60%	60%	60%	60%	60%	60%	60%
■ Performance	71%	56%	79%	71%	72%	77%	72%

# Ethnicity

## February 2011 STAR Comparison to Norms

### Percentage of Students at or Above Stanine 5

